

Ekka

ROYAL QUEENSLAND SHOW

INFORMATION BOOKLET

RURAL DISCOVERY DAY



Foundation - 6

TABLE OF CONTENTS

<i>Document Information.....</i>	<i>3</i>
<i>Excursion Details.....</i>	<i>3</i>
<i>Important Contacts.....</i>	<i>3</i>
<i>Proposed Activities.....</i>	<i>4</i>
<i>Rural Discovery Day Sessions.....</i>	<i>4</i>
<i>Rural Discovery Day Sneak Peek.....</i>	<i>5</i>
<i>Excursion Day Schedule.....</i>	<i>6</i>
<i>Teacher Responsibilities.....</i>	<i>6</i>
<i>Dress Code & Precautions.....</i>	<i>7</i>
<i>Transport.....</i>	<i>7</i>
<i>Risk Assessment.....</i>	<i>8</i>
<i>Supervision Arrangements.....</i>	<i>8</i>
<i>Medical & Personal Information.....</i>	<i>8</i>
<i>Excursion Costs.....</i>	<i>9</i>

LUNCHTIME SPONSOR

Ekka would like to extend a big thank you to Grove Juice for sponsoring the Rural Discovery Day lunch breaks, providing a free juice for every child!



DOCUMENT INFORMATION

This excursion information booklet has been developed to assist educators in completing school excursion consent forms and risk assessments. It provides important details regarding proposed activities, day schedules, teacher/educator supervision, transport, dress code, medical and personal information, and excursion costs.

If you have any questions, please feel free to contact the representatives listed under 'Important Contacts'.

EXCURSION DETAILS

Event: Rural Discovery Day

Dates: Monday 18 – Friday 22 May 2026

Arrival: 9am - 9:30am

Departure: 2pm

Location: The Pavilion – Entry via Gate 5, 48A O'Connell Terrace, Bowen Hills, Brisbane Showgrounds



IMPORTANT CONTACTS

Rural Discovery Day Enquiries

Brendan Alexander | Competitions & Events Planner

BAlexander@rna.org.au

Education Content Enquiries

Emily Holden | Entertainment & Education Coordinator

EHolden@rna.org.au



RURAL DISCOVERY DAY SESSIONS

Rural Discovery Day includes six curriculum-aligned, immersive agricultural activities- selected from a total of eight available options by our team - with accompanying classroom resources provided to support learning before and after the event.



QLD Beef Up Close Session

Students will explore different cattle breeds, gain insights into farming practices, and enjoy hands-on opportunities to connect with the animals and the people in the industry.



Wool Workshop Session

Students will explore the journey of wool from sheep to yarn in this hands-on workshop. They'll sort fleece, and try traditional techniques like carding, spinning, and weaving on a hand loom, finishing with a colourful wool bracelet to take home.



Journey of an Egg Session

Students will discover the nutritional benefits of eggs, from their high protein content to essential vitamins and minerals. They'll experiment with flavours and ingredients to create a simple, open-faced sandwich that's both healthy and uniquely their own.



Sugarcane Session

Students will explore the sweet journey of sugar-from paddock to packet-tasting, touching, and discovering how sugarcane is grown, processed, and reused. They'll learn how every part of the plant is valued and plant their own sugarcane.



Worms - Composting Session

Students will explore how composting with worms helps improve soil health and contributes to sustainable farming. They'll learn practical steps for composting at home or in the school garden.



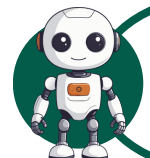
Scarecrow Making Session

Students will work together to build scarecrows, exploring their role in keeping crops safe, understanding traditional and modern farming practices, and using teamwork to bring their ideas to life.



Bees - Foundation of Agriculture Session

Students will learn about the key part bees play in the process of pollination, sustainable honey production and our role in protecting ecosystems.



Robotics in Agriculture Session

Students will explore the future of farming by diving into interactive agriculture robotics activities. They will learn how technology is transforming rural industries through fun, hands-on challenges and design their own innovative solutions.



Drones - Farming from the Sky Session

Students will learn how drones are used in modern agriculture to monitor crops, manage livestock, and map large paddocks. The session demonstrates how farmers use drone technology to maintain the health of their crops, animals, and land.

RURAL DISCOVERY DAY SNEAK PEEK

Come with us on an exciting ag-venture! Our Ekka TV from the 2025 and 2024 Rural Discovery Day showcases the amazing, sensory opportunities for students at this excursion. Please note, the sessions change year on year!

Milking a Cow: Dairy & Cream Edition



Students Build a Scarecrow



Students Learn About Agriculture | Ekka TV Rural Discovery Day 2024



EXCURSION DAY SCHEDULE

Rural Discovery Day includes six curriculum-aligned, immersive agricultural activities - selected from a total of eight available options by our team.

Each activation has been thoughtfully designed to provide students with hands-on opportunities to engage, touch, smell, make, feel, and taste where appropriate. These experiences support key learning outcomes, helping students build strong connections between the importance of food and fibre and their everyday lives.

9:00AM - 9:30AM	30 MINS	BUS ARRIVAL
9:30AM - 9:45AM	15 MINS	SAFETY BRIEFING & INTRODUCTION
9:45AM - 10:15AM	30 MINS	SESSION ONE
10:15AM - 10:20AM	5 MINS	CHANGEOVER
10:20AM - 10:50AM	30 MINS	SESSION TWO
10:50AM - 11:10AM	20 MINS	MORNING TEA
11:10AM - 11:15AM	5 MINS	CHANGEOVER
11:15AM - 11:45AM	30 MINS	SESSION THREE
11:45AM - 11:50AM	5 MINS	CHANGEOVER
11:50AM - 12:20PM	30 MINS	SESSION FOUR
12:20PM - 12:50PM	30 MINS	LUNCH
12:50PM - 12:55PM	5 MINS	CHANGEOVER
12:55PM - 1:25PM	30 MINS	SESSION FIVE
1:25PM - 1:30PM	5 MINS	CHANGEOVER
1:30PM - 2:00PM	30 MINS	SESSION SIX
2:00PM	-	DAY CONCLUDES

Ekka-assigned Group Leaders will guide the movement of students between activations (during changeover), and a bell will signal the end of each session as well as all meal breaks.

TEACHER RESPONSIBILITIES

While Ekka staff support the delivery of activities and assist with group coordination, **teachers remain responsible for student supervision at all times.**

To help ensure each school group's experience at Rural Discovery Day is safe, well-organised, and engaging, we kindly ask teachers to:

- **Accompany their allocated group** when moving between activity stations and support smooth transitions.
- **Monitor and support student behaviour and engagement** throughout all activity sessions.
- **Float between split groups**, if required, to maintain appropriate supervision.
- **Supervise students during recess and lunch breaks**, ensuring safety and appropriate conduct.



TRANSPORT

Schools are required to organise their own transport. Buses will be able to drop off students via Gate 5, located at 48A O'Connell Terrace, Bowen Hills QLD.

Vehicles will be able to park onsite for the duration of the day with more details provided upon request.

Map: <https://www.brisbaneshowgrounds.com.au/visitors/map/>



DRESS CODE & PRECAUTIONS

- **Uniform:** School or sports uniform recommended.
- **Footwear:** Closed-in shoes only.
- **Sun Safety:** Hats and sunscreen are required.
- **Food:** Students must bring their own lunch and water bottle. **No refrigeration available.**
- **Water Refill Stations:** Available at venue.
- **Valuables:** Students are discouraged from bringing unnecessary items. The Ekka takes no responsibility for lost property.



RISK ASSESSMENT

Rural Discovery Day is considered a **medium to low risk excursion**. Key risk controls include:

- **Animal Interaction:** All animals are supervised by trained handlers. Animals used are domesticated and comfortable with interaction.
- **Environmental Exposure:** Handwashing facilities are provided.
- **Biosecurity:** In line with Queensland Health directives, hand washing and sanitising is mandatory before and after animal contact.
- **Medical Emergencies:** A paramedic is onsite throughout the event.
- **Allergy Management:** Sessions may involve grains, hay, egg, soil, and animal allergens. Ensure students carry medication and avoid relevant triggers.

For school-based risk assessment templates, please refer to the CARA guidelines from Education Queensland: [Animal Observation and Handling Guidelines](#)

SUPERVISION ARRANGEMENTS

Each activity session is designed for groups of **50-60 students**, and we recommend that at least one teacher supervises each group. The Ekka Education Department coordinates all group allocations, and while we always aim to keep individual school groups together, **sessions may include students from multiple schools**.

Additional teachers are welcome to attend, and the final student-teacher ratio will be confirmed upon booking. Each activity session will also be supervised by at least one Ekka staff member, along with the educators delivering the activities.

While there are no specific educator-to-child ratios for excursions, the National Regulations require that minimum supervision needs are considered with respect to the age of the students and type of activity involved. If the activity conducted away from schools may increase risks, then the standard of care required must therefore reflect the increase in identified risks, causing the required ratios to be higher than the minimum.

Please refer to the [Australian Children's Education & Care Quality Authority Policy](#) for further guidelines.

MEDICAL & PERSONAL INFORMATION

- Students with asthma, allergies, or other medical conditions must bring their medication (e.g., inhalers, EpiPens).
- Medical Action Plans should be shared with supervising teachers and relevant Ekka staff in advance.
- Hands-on sessions include contact with **grains, hay, egg, soil, and animals**, so please assess students' suitability before attending.
- **Paramedic onsite for emergency medical support.**
- **Food allergies:** Students must not share food and must avoid consuming anything not packed by their parent/guardian.



EXCURSIONS COSTS

Rural Discovery Day is \$19.95 per student. Entry for teachers/carers is free of charge.

The Ekka is not liable to give a refund or exchange the Ticket for cancellation of any reason. Once numbers have been confirmed and payment is received, no changes can be made to a booking.

For more information please contact our Event Planner Brendan Alexander at baalexander@royalqueenslandshow.com.au

Don't miss out! Complete your Expression of Interest today via www.ekka.com.au/education/rural-discovery-day/

Expressions of Interest Close on Friday 30 January at 3pm.



Ekka

ROYAL QUEENSLAND SHOW

DISCOVER QUEENSLAND'S BIGGEST CLASSROOM

*Join schools from across the state bringing
learning to life through the Ekka experience.*



Scan here to get involved!



Ekka

ROYAL QUEENSLAND SHOW



INTERNATIONAL AWARD WINNERS

The Royal Queensland Show (Ekka) is recognised for its excellence, over many years, by winning numerous awards at the International Fairs & Expos (IAFE) Awards.

IAFE has more than 1,000 members representing agricultural fairs from the United States, Canada, the United Kingdom, and Australia.

These awards represent the continued dedication the Ekka plays in bridging the country city divide, and educating the next generation on the essential role farming and agriculture plays in their everyday lives.



ekka.com.au