



ROYAL QUEENSLAND SHOW

Presented By:



QUEENSLAND'S LARGEST EVENT



EXHIBITOR PROSPECTUS 2026

WHY EXHIBIT?

**QLD'S
LARGEST
EVENT**

\$335+
AVERAGE
SPEND

**428,000+
VISITORS
HUGE BRAND
EXPOSURE**

**\$101
MILLION+
FREE PUBLICITY
GENERATED**



**JOIN THE EXPERIENCE AND
HELP SHAPE MEMORIES**



**DEMONSTRATE/SAMPLE
PRODUCTS TO
NEW AUDIENCES**



**GENERATE SALES WITH
COUNTRY / CITY CUSTOMERS**



**ENHANCE CUSTOMER
RELATIONSHIPS**



**CROSS PROMOTIONAL
DIGITAL OPPORTUNITIES**

TESTIMONIALS

"EKKA is a great community driven event that we put high on our calendar each year. Since attending we have had an overwhelming amount of return customers coming back to us year-on-year to get their fix of platter goodies. We really enjoy getting in-front of our customers and engaging with them one on one, which is highly beneficial to the exposure of our business. I can't recommend this event more."

**KIWI
Artisan**

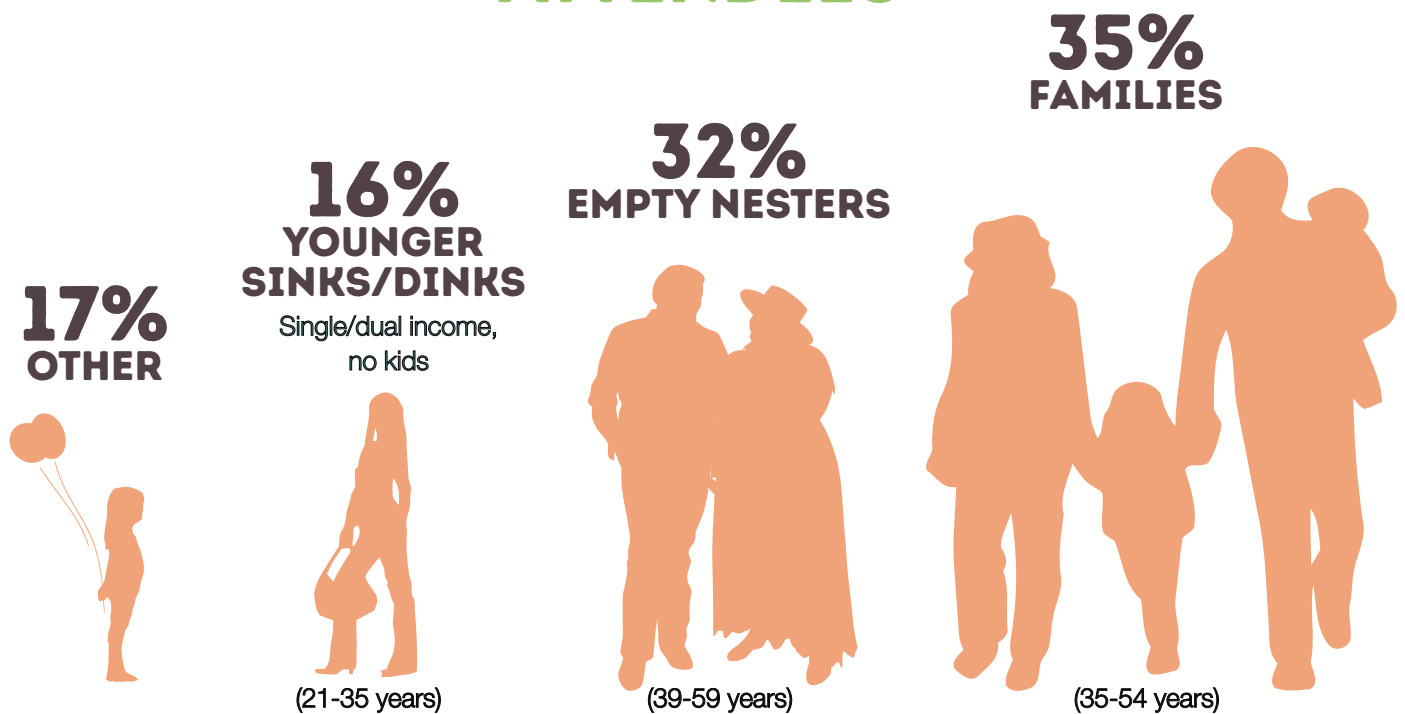
"Exhibiting at the Ekka is always one of the highlights of our trading year. We are always thrilled with the sheer volume of foot traffic which generates fantastic sales during the event. The exposure that the Ekka brings to our business provides considerable turnover during the show, but we also see many customers returning year on year, recognising our product and growing our business overall."

ICE TEA MAN

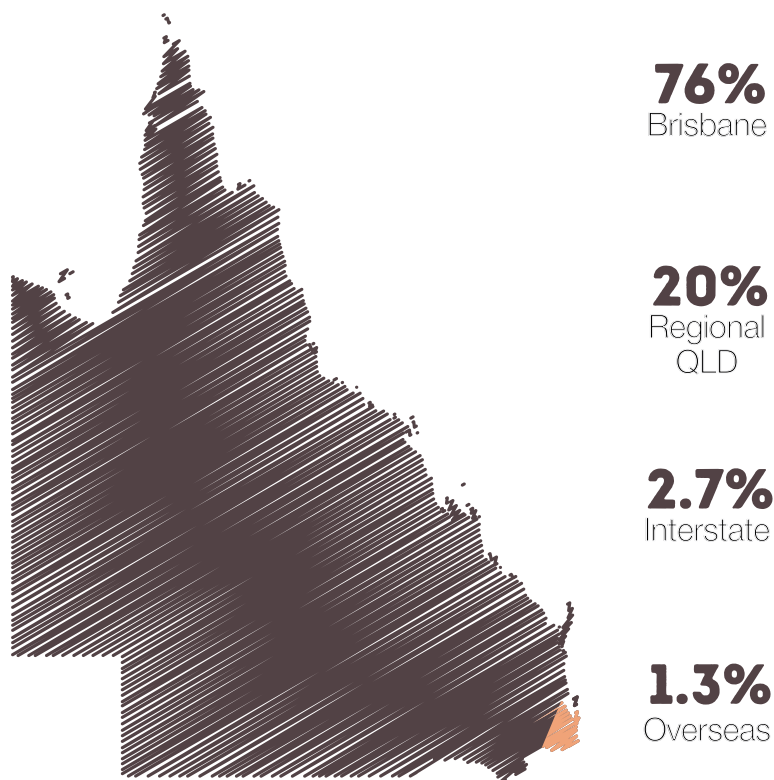
— home of the grandpa tin —

EKKA AUDIENCE

ATTENDEES



RESIDENCE



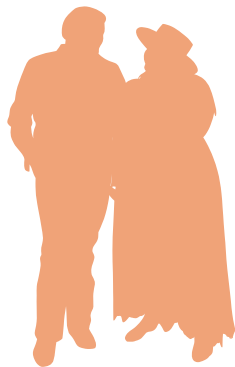
EKKA AUDIENCE

MOST CONSUMED



DAILY VISITOR SPEND

\$296
EMPTY
NESTERS



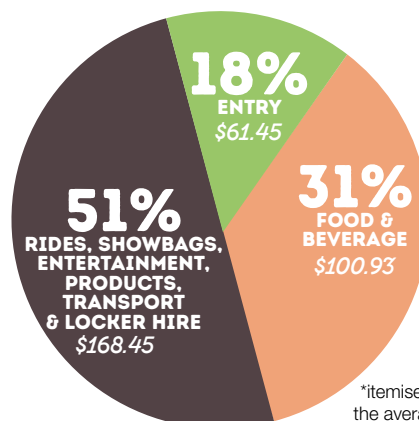
\$461
FAMILIES



\$278
YOUNGER
SINKS/
DINKS



BREAKDOWN OF VISITOR SPEND*



*Itemised expenditure by the average group at Ekka

COVERAGE

18.6

MILLION+
TOTAL SOCIAL
REACH

4.8

MILLION+
WEBSITE PAGE
VIEWS

998,000+

WEBSITE USERS

2.2 MILLION+

**FOOD VENDOR
SOCIAL
MEDIA REACH**

63 MILLION+

**COMMERCIAL &
SHOWBAG SOCIAL
MEDIA REACH**

1.2 MILLION+

**RIDES & GAMES
SOCIAL
MEDIA REACH**



REACH: 5,404,509



REACH: 7,421,113



REACH: 245,669

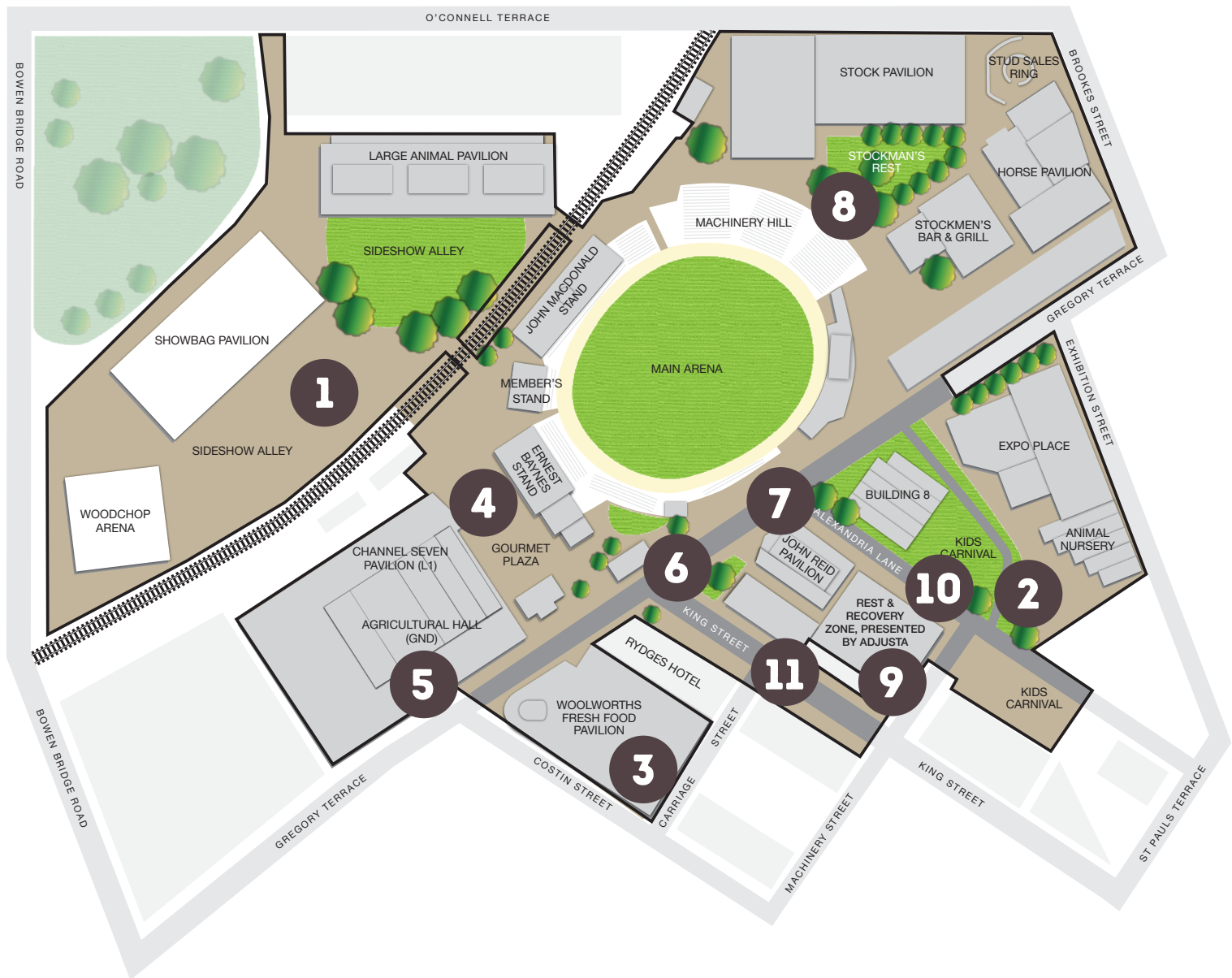


REACH: 4,082,799

MEDIA PARTNERS



EXHIBITOR SITES



1 SIDESHOW ALLEY

2 KIDS CARNIVAL

3 WOOLWORTHS FRESH FOOD PAVILION

4 GOURMET PLAZA

5 AG EDUCATION HALL

6 GREGORY TERRACE

7 JOHN REID PAVILION

8 MACHINERY HILL

9 REST & RECOVERY ZONE, PRESENTED BY ADJUSTA

10 ALEXANDRIA LANE

11 KING STREET



SITES 1 & 2 SIDESHOW ALLEY & KIDS CARNIVAL

There's definitely no shortage of entertainment at Ekka, with two carnival areas filled with rides and games. Sideshow Alley combines adult and family friendly attractions, while the Kids Carnival area is dedicated to the younger children.

SIDESHOW ALLEY

Sizes available: 1x2 to 30x7

Hours: 9am - late

KIDS CARNIVAL

Sizes available: 1x2 to 30x7

Hours: 9am - 9pm

SITE 3 WOOLWORTHS FRESH FOOD PAVILION

Woolworths Fresh Food Pavilion is certainly a favourite with foodies with thousands flocking to the site daily. A large range of food and beverage vendors come together each year to form a boutique foodie mecca showcasing the latest Instagram worthy treats.

Included in the undercover pavilion are fine foods and wines, beer, coffee, confectionery, condiments, cheeses and much more. This undercover area is the perfect escape from the winter sun for families to enjoy a diverse array of meal offerings. It's the one stop shop for snacks, lunch, dinner and drinks.

Shell scheme or bare space options are available for hire. Please note, marquees & gas are not permitted in this pavilion. Limited cold room and dry storage hire is available through the RNA.

Sizes available: 3x3 to 9x3

Hours: 9am - 7pm



SITE 4 GOURMET PLAZA

Gourmet Plaza is filled to the brim with flavours from all over the globe. With seating available, it's a popular spot for Ekka visitors to stop and enjoy restaurant quality meals at affordable prices, as well as alcoholic beverages and coffee. Suitable for exhibitor supplied food trucks or customised marquee stalls.

Sizes available: 6x3 to 6x6

Hours: 9am - late



SITE 5 AG EDUCATION HALL

Full of immersive hands-on educational activities and displays, the Ag Hall is very popular with families showcasing agriculture & horticulture. Perfect location to promote products that connect to the educational, farming or horticulture sectors.

Sizes available: 3x3 to 12x3

Hours 9am – 6pm

SITE 6 GREGORY TERRACE

Adjacent to the Main Arena, the Plaza and steps away from the animal nursery and kids' carnival areas, Gregory Terrace is the major thoroughfare of Ekka located in the heart of the Showgrounds.

It is split into two areas – Upper and Lower – both hugely popular areas filled with food, games and ride options.

Sizes available 3x3 to 9x3m

Hours: 9am - late





SITE 7 JOHN REID PAVILION

John Reid Pavilion is a popular shopping haven for visitors, featuring high-quality home and lifestyle products. With more than 40 sites available the pavilion offers everything from clothing and fashion accessories to homeware.

Sizes available: 3x3 to 6x6

Hours: 9am - 6pm



SITE 8 MACHINERY HILL

The perfect pit-stop for hungry crowds watching competitions in the Main Arena during the day and later the 20,000 strong crowd for the night show. Located behind Machinery Hill, this is a high foot traffic transit area, offering opportunities for food trucks to pop-up outlets.

Sizes available 3x3 to 9x3

Hours 9am - late

SITE 9 REST & RECOVERY ZONE, PRESENTED BY ADJUSTA

The Rest & Recovery Zone, presented by Adjusta is a go-to sanctuary for all things health, wellness and beauty — a relaxing space where guests can explore curated products, take a breath, and reset before diving back into the Show.

Sizes available: 3x3 to 6x6

Hours: 9am - 6pm



SITE 10 ALEXANDRIA STREET

Situated in one of the Ekka's most popular family areas, close to the Animal Nursery and Kids Carnival Area, Alexandria Lane bursts to life with a variety of games alongside everyone's favourite show food like dagwood dogs, ice-cream and more!

Sizes available: 3x3 to 6x6

Hours: 9am - 9pm



SITE 11 KING STREET

King Street is one of Brisbane's most popular food precincts featuring bars, restaurants, sweet treats plus family entertainment. A high foot traffic area due to its location, Ekka gate entrance plus popularity, King Street is a feast for the senses.

Sizes available: 3x3 to 12x3

Hours: 9am - 9pm

TYPES OF EXHIBITION SPACES

PAVILION - SHELL MODULE

Includes walls, company name signage, lighting and one 4-amp power point.

BARE SPACE

‘Unimproved’ floor space. You must arrange your own stand build, flooring and supply Exponet with your power requirements. Your stand design and structure must be provided to and approved by the RNA.

SHELL MODULE EXAMPLE



OUTDOOR AREAS - MARQUEE

Marquee includes structure, lighting and one 4-amp power point.

BARE SPACE

‘Unimproved’ floor space.

You must arrange your own stand build, flooring and supply the RNA with your power requirements. Your stand design and installation must be provided to and approved by the RNA.



KEY THINGS WE LOOK AT WHEN ASSESSING APPLICATIONS:

SITE PRESENTATION - Professionally signed, eye catching, colourful, clean

PRODUCT OFFERING - Trending, unique offerings, marketable items

PRICING - Competitive pricing of products

SAMPLING - Does your stall offer sampling of items or products.

APPLICATION - Completion of all parts of the application, including site sizing & good photos of your stall/set up

EKKA 2026 APPLICATION PROCESS

1. APPLICATION PROCESS

Complete an Expression of Interest through our Ekka Leasing Portal with your stand design, stand requirements, product and pricing list.

Final pricing to be submitted with application. Any changes to pricing or product list must be communicated to and approved by the RNA.

Food Vendors must submit one (1) Famil Meal and one (1) Low-Cost (under \$10) menu item with their application.

www.leasing.ekka.com.au

2. SUCCESSFUL APPLICATIONS

Successful applications will receive a Letter of Offer, with details about their allocated stand location and any additional relevant information.

3. SECURING YOUR STAND

Acceptance of Ekka's T&C's and payment of a deposit of 25% of the licence fee within 2 weeks of receiving your Letter of Offer is required to secure your space.

4. DOCUMENTATION

Ensure that final invoice has been processed and paid by outlined invoice dates.

Submit all required documentation by Friday 26th June 2026.

5. EXHIBITOR PACKS

Collect exhibitor passes and packs from the Royal International Convention Centre, Bowen Hills from Wednesday 29th July 2026.



IMPORTANT INFORMATION

KEY DATES 2025

APPLICATIONS OPEN

WEDNESDAY 11TH FEB 2026

APPLICATIONS CLOSE

WEDNESDAY 6TH MAY 2026

BUMP IN

EARLY AUGUST 2026
SPECIFIC DATES TO BE ADVISED

SHOW DATES

SATURDAY 8TH -
SUNDAY 16TH AUGUST 2026

FINAL PAYMENT & REQUESTED

DOCUMENTATION DUE

FRIDAY 26TH JUNE 2026

BUMP OUT

SUNDAY 16TH (FROM 11PM) -
WEDNESDAY 19TH AUGUST 2026

VEHICLE FREE DAYS

THURSDAY 6TH & FRIDAY 7TH
AUGUST 2026 (6AM-6PM)

EKKA LEASING CONTACTS



BREEANNA OLIVEIRA
EXHIBITOR SALES COORDINATOR

T +61 7 3253 3913
E boliveira@ekka.com.au



KARL SCHMIDT
EXHIBITION OPERATIONS MANAGER

T +61 7 3253 3954
E kschmidt@ma.org.au

FURTHER INFO AT WWW.EKKA.COM.AU/LEASING